

**Western Geophysical**

**Seismic Vessel - Western Pride**

V-sat office: +61 (8) 9268 26 36  
 V-sat Party Chief: +61 (8) 9268 26 63  
 V-sat facsimile: +61 (8) 9268 26 36

**Joe Scarlett, Project Manager**

Telephone: +61 (8) 9268 26 42  
 Facsimile: +61 (8) 9268 26 00  
 Mobile: +61 (0)412 774 016  
 After hours: +61 (8) 9243 60 75

**Chris King, Supervisor Marine Operations**

Telephone: +61 (8) 9268 26 76  
 Facsimile: +61 (8) 9268 26 00  
 Mobile: +61 417 174 965  
 After hours: +61 (8) 9457 07 07

**Perth Office - General Enquiries**

Telephone: +61 (8) 9268 26 82  
 Facsimile: +61 (8) 9268 26 00

**Support and Scout Vessel**

**Smit Lloyd 28 - Support Vesel**

HF: 4620 MHz or 4535 MHz  
 VHF: Channel 16  
 CB: Channel 96

**Perfect Lady - Scout vessel**

John McKinnon  
 Telephone: +61 (8) 8738 2151  
 Facsimile: +61 (8) 8738 2151  
 Mobile: +61 428 838 235  
 HF: 4620 MHz or 4535 MHz  
 VHF: Channel 16  
 CB: Channel 96

**Woodside Energy Ltd.**

**Chris Carpenter, Operations Geophysicist**

Telephone: +61 (8) 9348 44 68  
 Facsimile: +61 (8) 9348 44 64  
 Mobile: +61 417 181 113  
 After hours: +61 (8) 9331 47 74

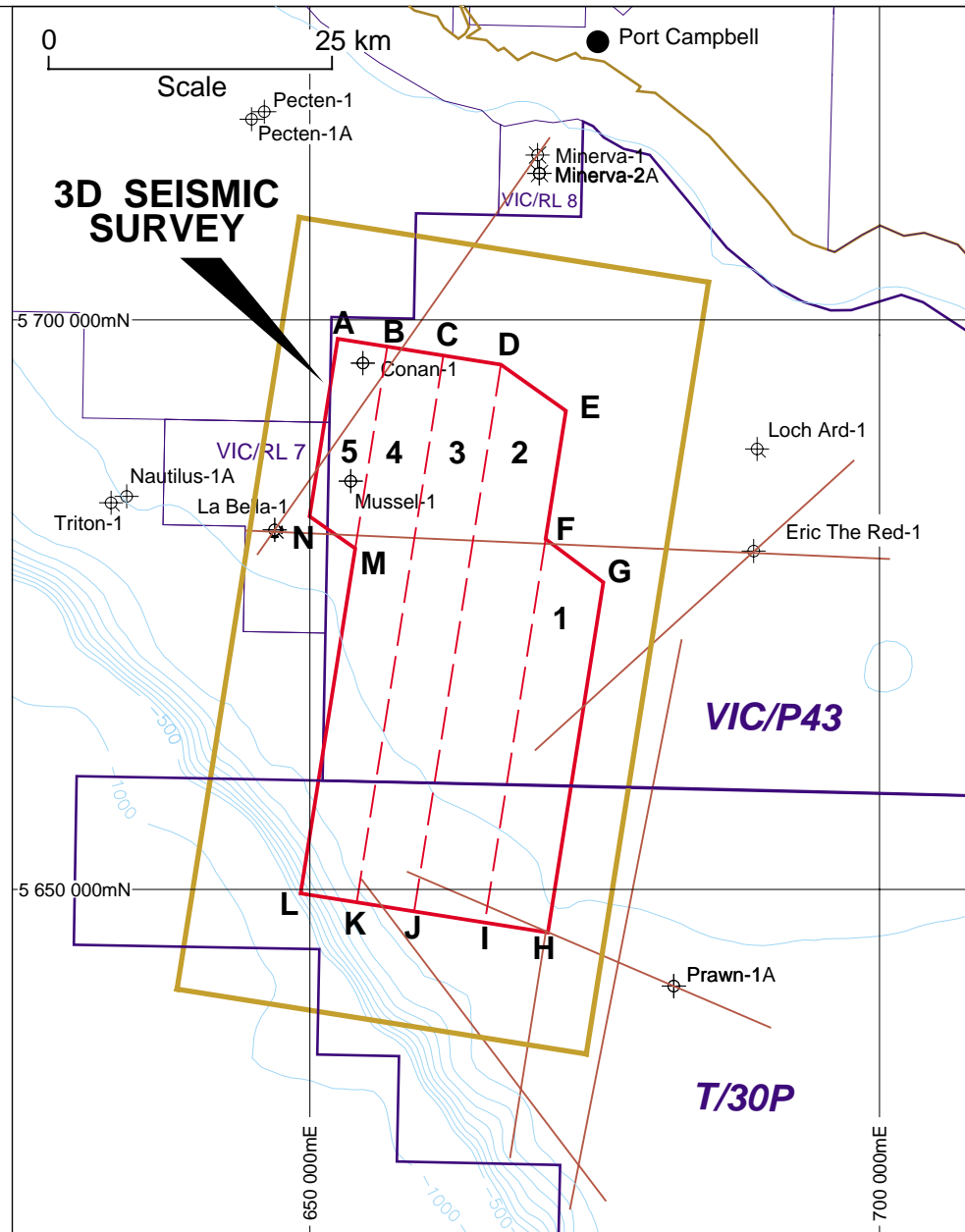
**Wim-Jan Adolfs, Geophysicist**

Telephone: +61 (8) 9348 66 32  
 Facsimile: +61 (8) 9348 44 64  
 Mobile: +61 418 524 889  
 After hours: +61 (8) 9389 61 64

**Fisheries contacts**

**Andrew Levings, Fishery Liaison**

Telephone: +61 (3) 5523 51 96  
 Mobile: +61 (0) 419 104 112



**Co-ordinates of Work Corridors**

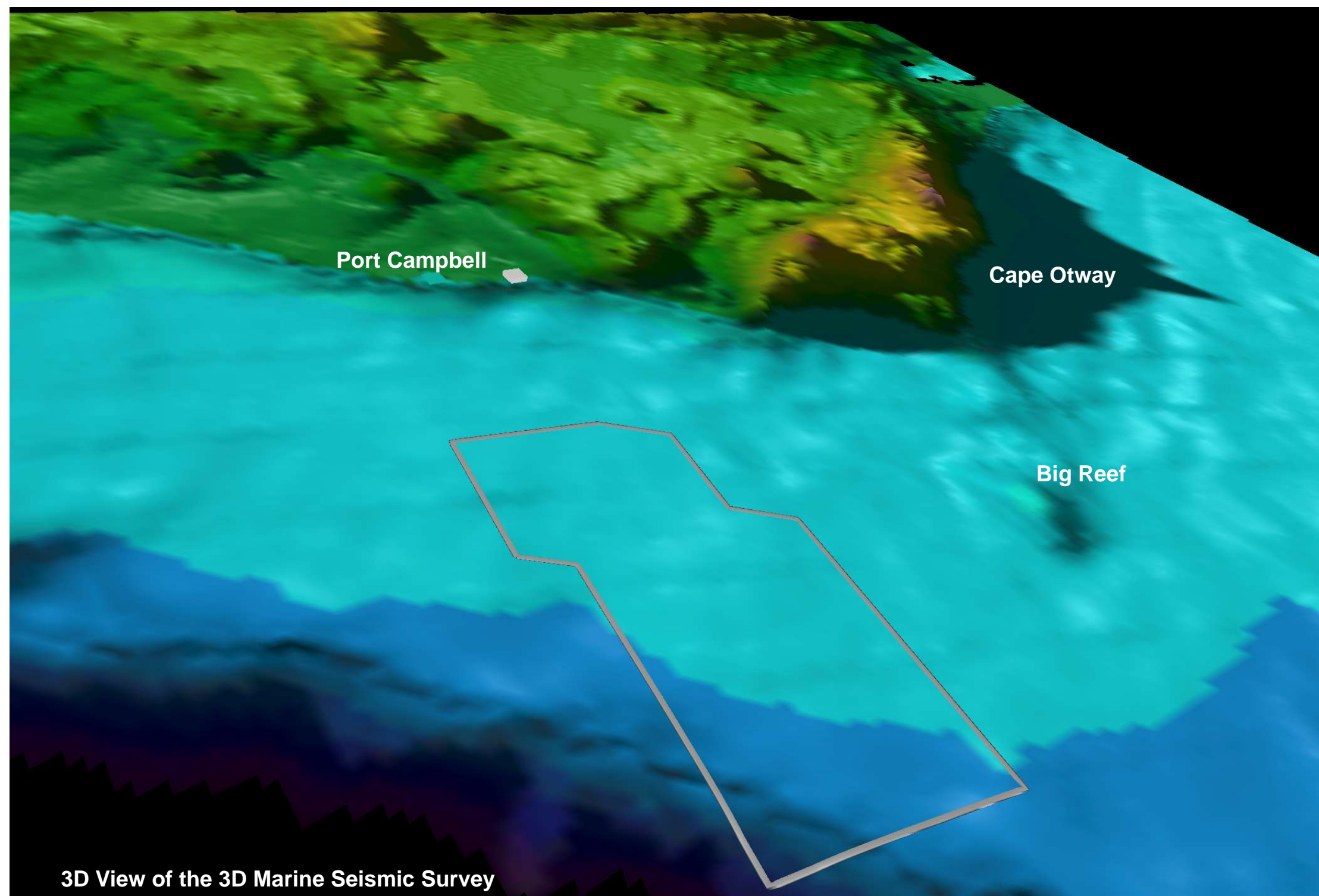
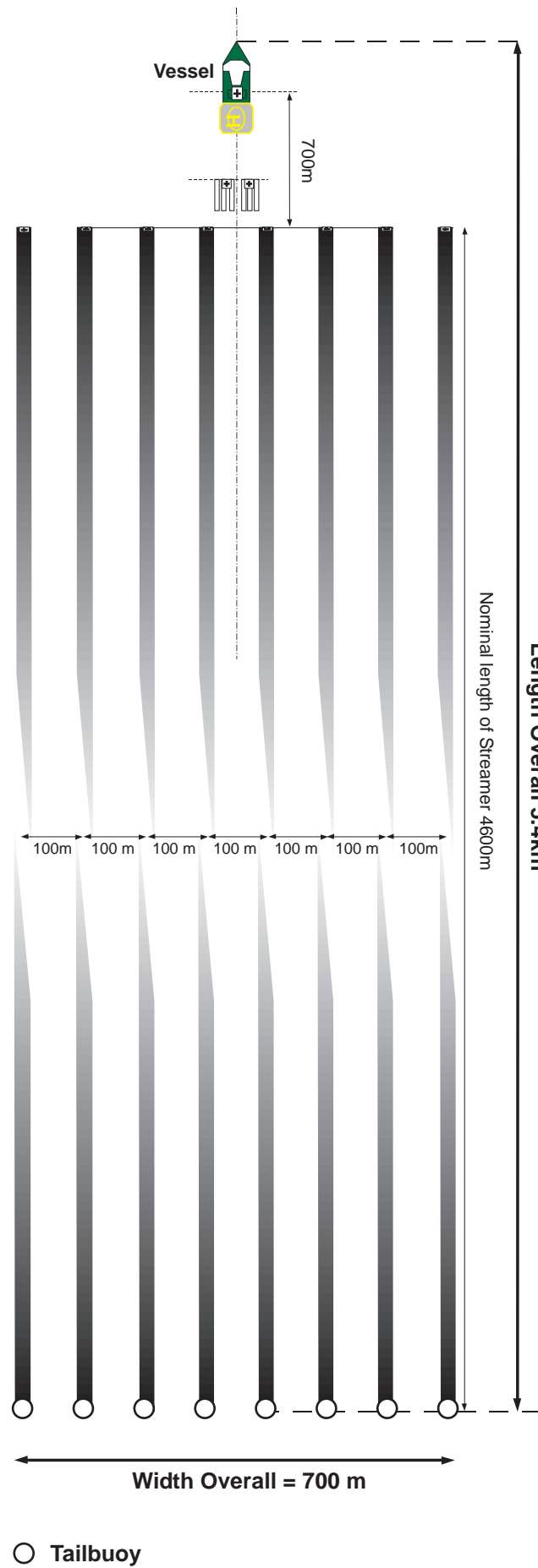
Point	Latitude AGD84	Longitude AGD84
A	38°51'01"S	142°45'24"E
B	38°51'21"S	142°48'25"E
C	38°51'43"S	142°51'50"E
D	38°52'06"S	142°55'20"E
E	38°54'13"S	142°59'21"E
F	39°00'20"S	142°58'17"E
G	39°02'19"S	143°01'51"E
H	39°18'59"S	142°58'56"E
I	39°18'35"S	142°55'04"E
J	39°18'07"S	142°50'45"E
K	39°17'45"S	142°47'14"E
L	39°17'22"S	142°43'48"E
M	39°00'57"S	142°46'43"E
N	38°59'29"S	142°43'54"E

- - - - - Work Corridors  
(Occupation sequence 1 to 5)
- — — — — 2D Sail Lines
- — — — — Area of Operations  
allowing for 9 km  
turning circle

**NOT FOR  
NAVIGATION**

**VIC/P43 & T/30P 3D MARINE SEISMIC SURVEY**





OVERVIEW OF THE 3D MARINE SEISMIC SURVEY VIC/P43 & T/30P